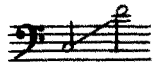


НИ ОТЗЫВА, НИ СЛОВА, НИ ПРИВЕТА...



Слова А. АПУХТИНА

Ноты с сайта - www.notarhiv.ru

Соч. 28, № 5

Andante sostenuto

espress.

нар *p*

a piena voce

Ни от_ зы_ ва, ни сло_ ва, ни при_ ве_ та...

p

пу_ сты_ не_ ю меж на_ ми мир ле_ жит, и мы_сль мо_ я сво_

cresc.

mf

- про- сом без от- ве- та ис- пу- ган- но над серд- цем тя- го- тит!

This system contains the first line of music. The vocal line is in the bass clef, starting with a *p* dynamic and moving to *f*. The piano accompaniment is in the grand staff (treble and bass clefs), with the right hand playing a melodic line and the left hand providing harmonic support.

У- жель сре- ди ча- сов тос- ки и гне- ва про-

This system contains the second line of music. The vocal line continues in the bass clef. The piano accompaniment includes a *p* dynamic marking and a *cresc.* (crescendo) marking.

- шед- ше- е ис- чез- нет без сле- да, как лег- кий звук за- бы- то- го на-

This system contains the third line of music. The vocal line continues in the bass clef. The piano accompaniment includes a *cresc.* marking and an *f* dynamic marking.

- пе- ва, как в мра- кноч- ной у- пав- ша- я звез- да?

This system contains the fourth line of music. The vocal line continues in the bass clef. The piano accompaniment includes a *p* dynamic marking and a *cresc.* marking.

a tempo *dim.*

ff.

Как лег_ кий звук за -

poco string.

mf *cresc.* *ff*

mf

- бы_ то_ го на_ пе_ ва, как в мрак ноч_ ной у_ пав_ ша_ я

dim. *mf*

звез_ да?

espress.

p

pp